

LANDSCAPE ASSESSMENT

Definition

The purpose of landscape assessment in landscape planning is to support the identification of landscape values, development opportunities and management options. It is a broad term referring to various assessment types that may be classified by their objective as resource (opportunities for specific uses), capacity (constraints for specific uses) and other (not necessarily planning orientated) assessments (e.g. formal aesthetic, character, ecological assessments). Assessments can take account of quantitative and non-quantitative (descriptive or depictive) factors.

Related terms

Environmental Impact Assessments, Landscape capacity, Landscape character, Social Impact Assessment, Visual assessment

Keywords

Landscape quality, Renewable Energy systems, Landscape identity

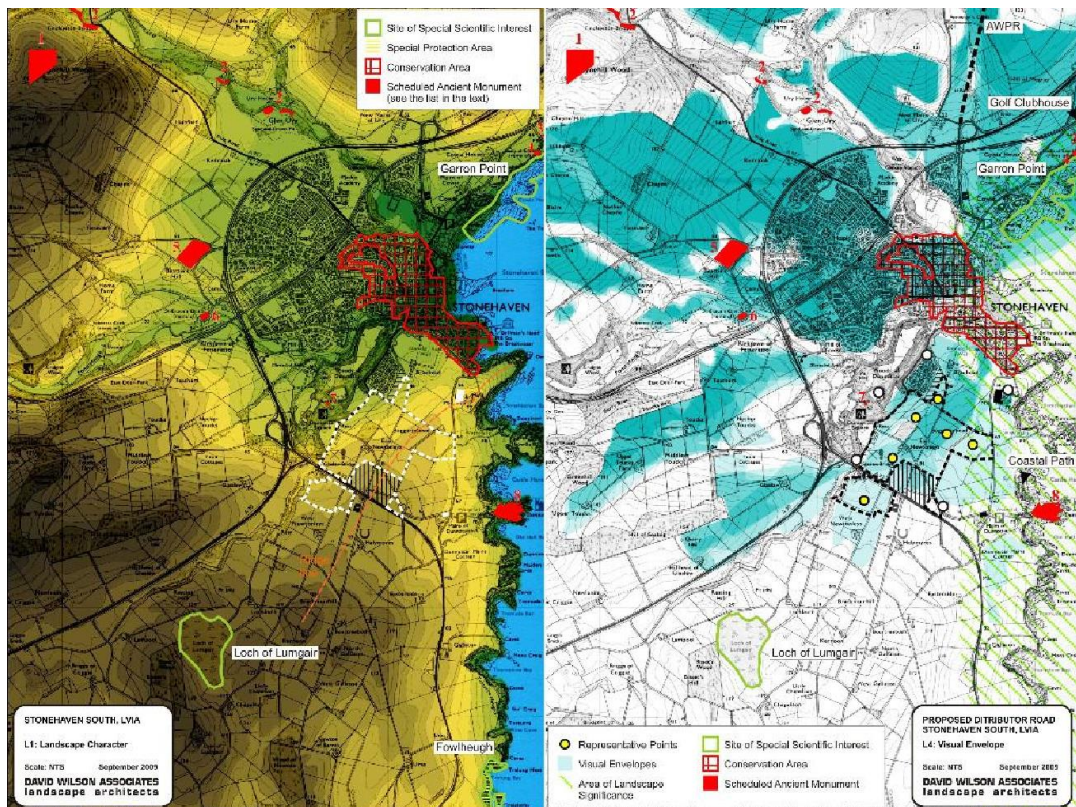


Figure 36 Maps showing the relationship between landscape and sites of special scientific interest, protection areas, ancient monuments, visual envelopes, etc. (Source: Diagram from Stonehaven South LVIA, UK © David Wilson Associates)

Source

Definition developed by COST RELY Action.

Translations

Bosnia and Herzegovina Procjena pejzaža/okoliša
 Bulgarian Оценка на ландшафта
 Croatian Studija utjecaja na krajolik
 Czech Hodnocení krajiny
 Danish Landskabsvurdering
 Dutch Landschappelijke beoordeling
 Esperanto Pritakso de pejzaĝo
 Estonian Maastiku hindamine
 Finnish Maisema-arviointi
 French Evaluation du paysage
 German Landschaftsbewertung
 Greek Κατανόηση Τοπίου
 Hebrew הערכה נופית

Hungarian Tájértékelés
 Italian Valutazione paesaggistica
 Icelandic mat á landslagi / landslagsmat
 Latvian Ainavas novērtējums
 Lithuanian Kraštovaizdžio vertinimas
 Montenegrin Procjena pejzaža
 Polish Waloryzacja krajobrazu
 Portuguese Avaliação paisagística
 Romanian evaluarea peisajului
 Russian Оценка ландшафта
 Slovenian Vrednotenje krajina
 Serbian Procena pejzaža
 Spanish Evaluación del paisaje
 Swedish Landskap bedömning