

LANDSCAPE CHARACTER

Definition

The distinct and recognisable pattern of elements that occurs consistently in a particular type of landscape. It is a standard methodology for identifying, describing, classifying and mapping what is distinctive about landscapes. It is used in the assessment of landscape impacts for land use changes. For COST RELY, it is a basis of considering some of the landscape impacts of renewable energy developments (e.g. the UK).

Related term

Landscape identity

Keywords

Landscape Character Assessment, Landscape quality, Landscape value

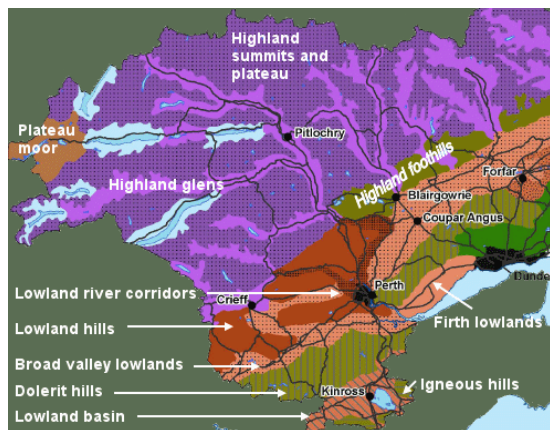


Figure 7a Map of Landscape Character from Tayside Landscape Character Assessment, produced for Scottish Natural Heritage.
(Source: Perth and Kinross Council, UK)

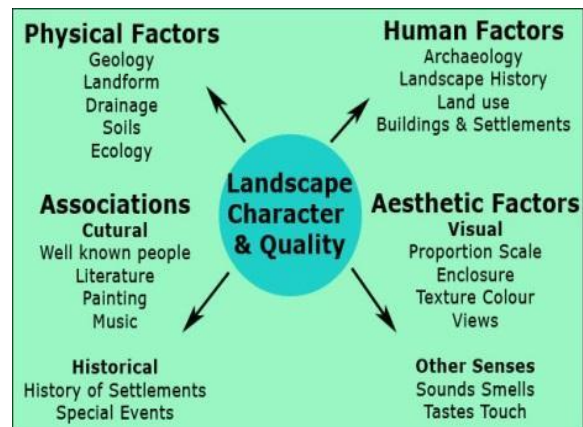


Figure 7b Physical and perceptual characteristics to be considered in a Landscape Character Assessment.
(Source: [http7](http://7))

Source

Countryside Agency and Scottish Natural Heritage. 2002: Landscape character assessment guidance for England and Scotland, Cheltenham, Countryside Agency; Edinburgh, Scottish Natural Heritage, Paragraph 7.8

Translations

Bosnia and Herzegovina Karakter pejzaža/ okoliša
Bulgarian Характер на ландшафта
Croatian Karakter krajolika
Czech Krajinný ráz
Danish Landskabskarakter
Dutch Landschapskarakter
Esperanto Karaktero de pejzaĝo
Estonian Maastikukarakter
Finish Maiseman Luonne
French Caractère du paysage
German Eigenart der Landschaft
Greek Χαρακτήρας τοπίου
Hebrew מאפיין נוף
Hungarian Tájkarakter

Italian Carattere del paesaggio
Islandic Landslagseinkenni / einkenni landslags
Latvian Ainavas raksturs
Lithuanian Kraštovaizdžio pobūdis
Montenegrin Karakter pejzaža
Polish Charakter krajobrazu
Portuguese Carácter da paisagem
Romanian Caracterul peisajului
Russian Ландшафтный характер
Slovakian Krajinný ráz
Slovenian Značaj krajine
Serbian Karakter pejzaža
Spanish Cualidad/Carácter del paisaje
Swedish Landskapskarakter