

LANDSCAPE SENSITIVITY

Definition

The degree to which the character and qualities of the landscape are affected by specific types of development and land-use change. In the context of COST RELY, such change is the development of renewable energy systems.

Related terms

Landscape character, Landscape quality, Landscape vulnerability

Keywords

Capacity, Development, Planning

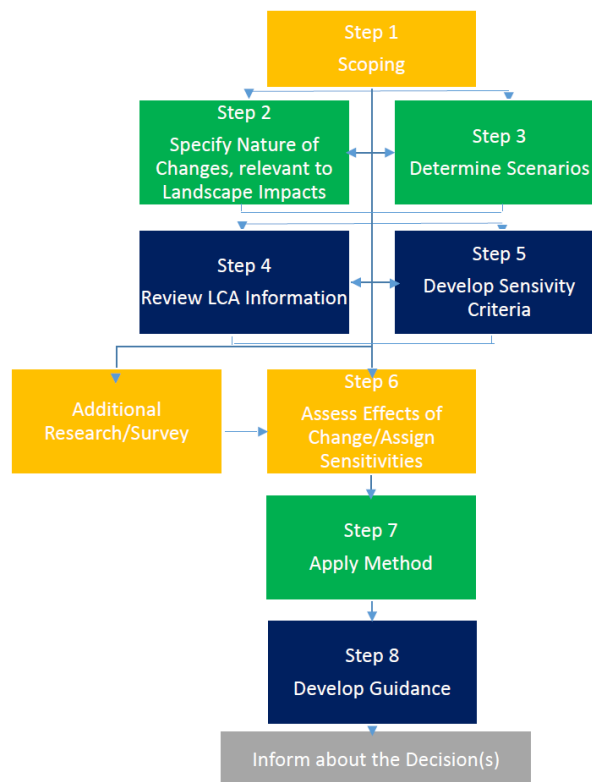


Figure 13 Steps in a landscape sensitivity study. (Source: Adapted by COST RELY, based on: Land Use Consultants (LUC), <http11>)

Source

Countryside Agency and Scottish Natural Heritage. 2002: Landscape character assessment guidance for England and Scotland. Cheltenham, Countryside Agency; Edinburgh, Scottish Natural Heritage, Topic Paper 6: Techniques and Criteria for Judging Capacity and Sensitivity.

<http9: http://www.snh.gov.uk/protecting-scotlands-nature/looking-after-landscapes/landscape-resource-library/glossary-of-terms/>

[http11: <http://landuse.co.uk/sectors/energy-infrastructure/>](http11: http://landuse.co.uk/sectors/energy-infrastructure/)

Translations

Bosnia and Herzegovina Osjetljivost pejzaža/ okoliša

Bulgarian Чувствителност на ландшафта

Croatian Osjetljivost krajobraza

Czech Citlivost krajiny

Danish Landskabets sensitivitet

Dutch Gevoeligheid van het landschap

Esperanto Sentemeco de pejzaĝo

Estonian Maastiku tundlikkus

Finish Maiseman herkkyys

French Sensitivité du paysage

German Empfindlichkeit der Landschaft

Greek Ευαισθησία Τοπίου

Hebrew נופית רגישות

Hungarian Táji érzékenység

Italian Sensibilità paesaggistica

Islandic Næmi landslags

Latvian Ainavas jutīgums

Lithuanian Kraštovaizdžio jautrumas

Montenegrin Osjetljivost pejzaža

Polish Wrażliwość krajobrazu

Portuguese Sensibilidade da paisagem

Romanian Senzitivitatea peisajului

Russian Чувствительность ландшафта

Slovakian Citlivosť krajiny

Slovenian Občutljivost krajine

Serbian Сензитивност пејзажа

Spanish Susceptibilidad del paisaje

Swedish Landskaps känslighet